

ro'

COLLECTION
DENMARK

Spring & Summer 2019



Ro is the Danish word for
serenity, calmness and
peace of mind.

Ro Collection is a Danish design company deeply rooted
in the love of craftsmanship, quality and beauty.
We create objects of design and craft, in a professional
and sensual manner. The collection includes both
commercial design products and unique objects.

Rebecca Uth, the creative director of Ro Collection,
and a designer herself, collaborates with the other
designers who contribute to the collection.

Quality

All materials are long-lasting
and can be recycled.

Originality

We always design from scratch.

(Hand)Made in Europe

by skilled craftsmen and artisans.

Ro Collection is the courage to set the bar high and to
transform imaginative emotions into aesthetic design that
creates value in our lives. All the objects serve a functional
purpose that appeals to our aesthetic sense, while
simultaneously providing a long lasting perspective.



FLOWER VASE
no. 23 & 24, Smoked grey

FLOWER VASE

Crystal clear and coloured glass come together in the Flower Vase which is handblown in heavy glass with classic craftsman principles.

The vase is handmade and tends to have individual air bubbles and differences in the colours and transparency from vase to vase, giving each piece its own unique story.

Because of its shape and weight, the flower vase stands robust, while the graduated tint at the bottom hides the flower water and lets the stems emerge gradually — as if nature and object merge in both an aesthetic and functional unity.

The Flower Vase is available in five sizes, three colours, and is suited for both small and large bouquets including long-stemmed flowers and branches.

Flower Vase is created by designer Nina Erichsen.

FLOWER VASE
no. 1 & 2, Burmt sienna



A traditional glass-blowing handcraft in natural colour tones

All our glassware are handblown pieces. Crystal clear glass and coloured glass are melted together. The glassmaker blows the melted glass into a mould. Their colours are reminiscent of antique chemist jars, bottles and fine art pieces in Smoked grey glass and held in colour tones of the surrounding nature of Denmark — the clear blue sea, the amber and grey stones from our coast, purple from the heathlands.



FLOWER VASE
no. 24, Indigo blue

All glass pieces are designed in Denmark and the creative process is grounded by handcraft in small workshops.



After down cooling of the 1300 degrees hot vase the true colour appears.



Skilled craftsmen carry out the larger productions.





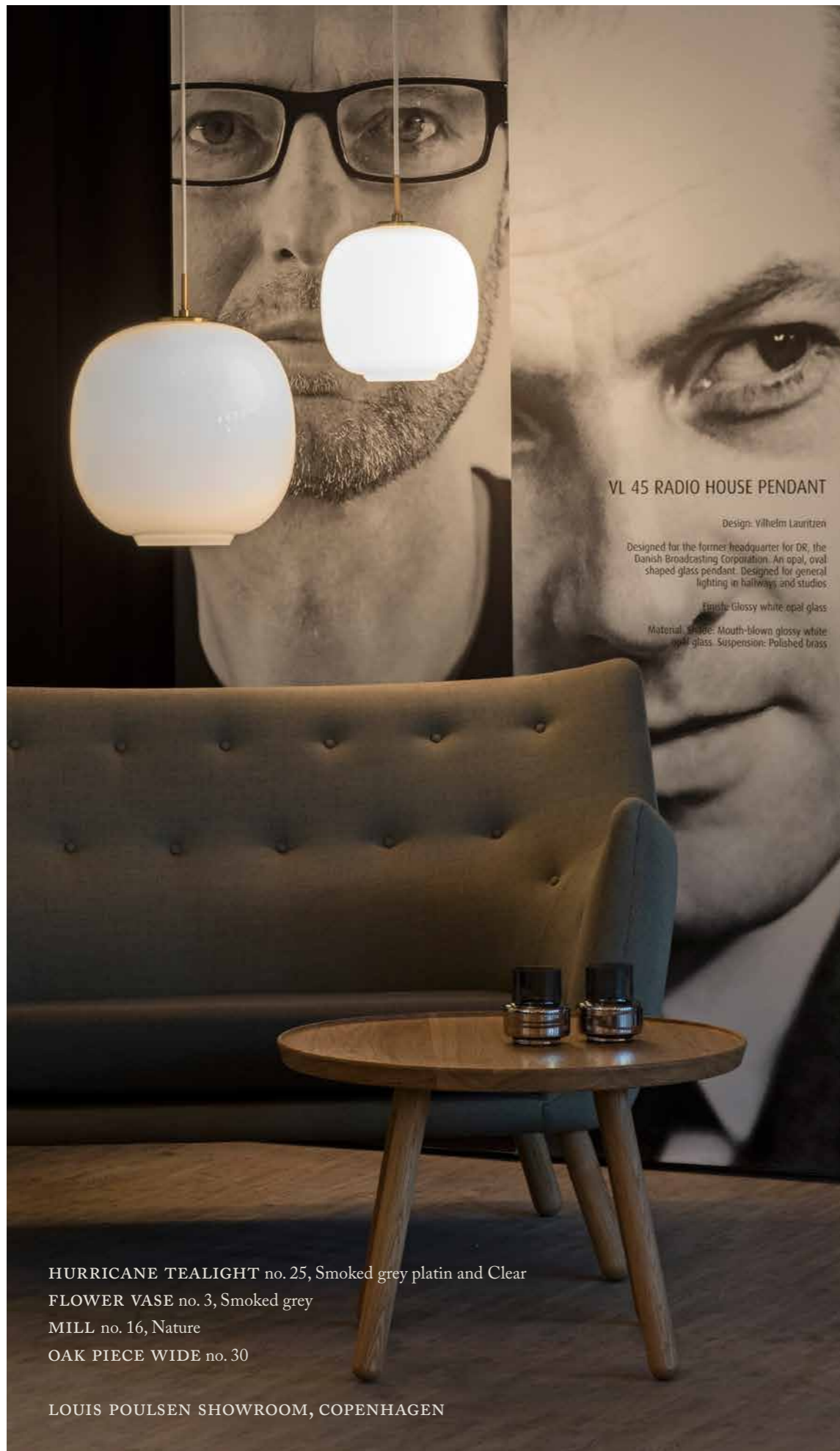


HURRICANE no. 25, Smoked grey gold and Clear
FLOWER VASE no. 1,2 and 23, Indigo blue

KOPENHAGUE, PARIS

IO

II



VL 45 RADIO HOUSE PENDANT

Design: Vilhelm Lauritzen

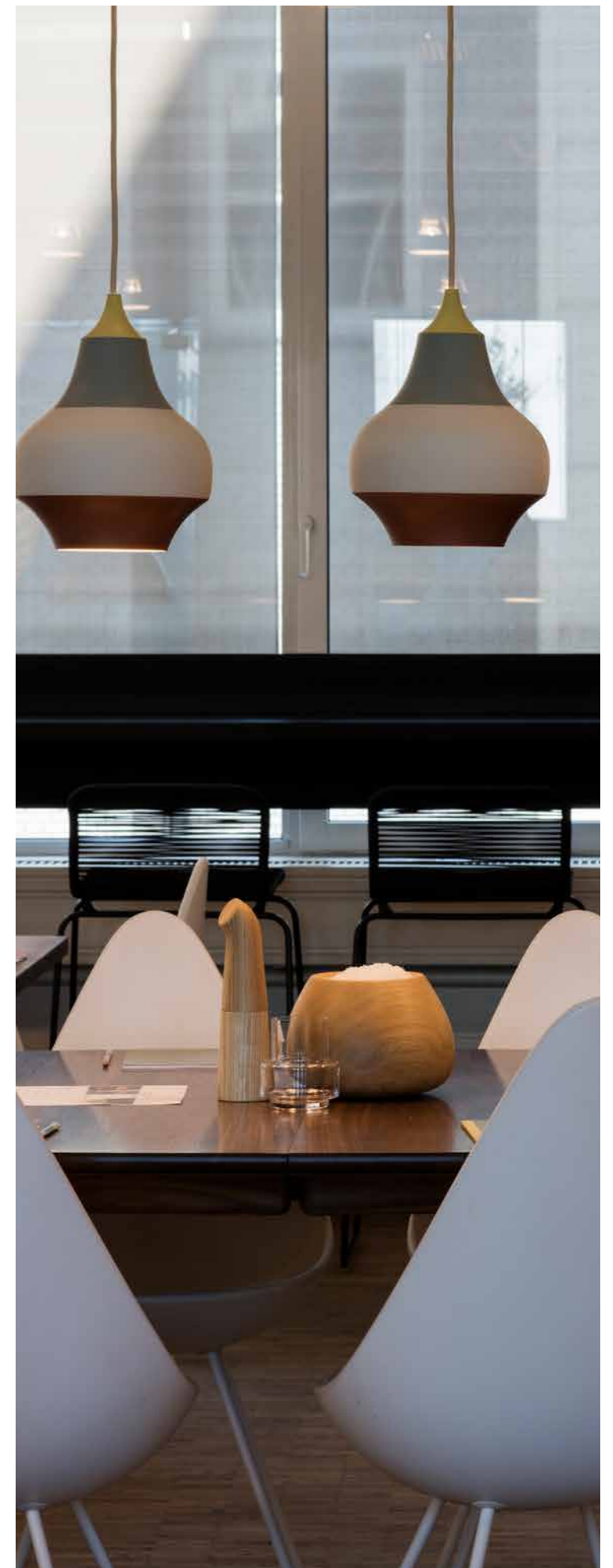
Designed for the former headquarter for DR, the Danish Broadcasting Corporation. An opal, oval shaped glass pendant. Designed for general lighting in hallways and studios.

Finish: Glossy white opal glass

Material, shade: Mouth-blown glossy white opal glass. Suspension: Polished brass

HURRICANE TEALIGHT no. 25, Smoked grey platin and Clear
FLOWER VASE no. 3, Smoked grey
MILL no. 16, Nature
OAK PIECE WIDE no. 30

LOUIS POULSEN SHOWROOM, COPENHAGEN



HURRICANE COLLECTION
no. 25, 26, 44 & 45 in colours of Amber, Clear, Smoked grey
& Smoked grey with pure platinum and gold

A lantern and a vase,
at the same time

Hurricane is a handblown glass collection in natural colour tones for both candlelights and flowers.

Some are simple in solid colours and some are mixed with brushstrokes of pure gold and platinum.

The precious metals are hand-painted onto the Smoked grey glass in a thin layer to make it translucent, to allow the flame of the light to shine through.



14

15

HURRICANE
no. 25, 26, 44 & 45
Clear, Heather, Smoked grey & Smoked grey platinum

HURRICANE

With inspiration from the antique kerosene lamps, where a tall cylinder of glass spreads the light and protects the flame from the surroundings, the Hurricane is born.

Hurricane adds evocative light to summer nights on balconies and terraces and lights up cosy moments indoor.

The many variations of coloured glass create atmosphere. Light and simple in the crystal clear glass. Warm and cosy with Amber. Classic ambience in Smoked grey and Heather. Exclusive moments in hand-painted pure Platinum or Gold on Smoked grey glass.

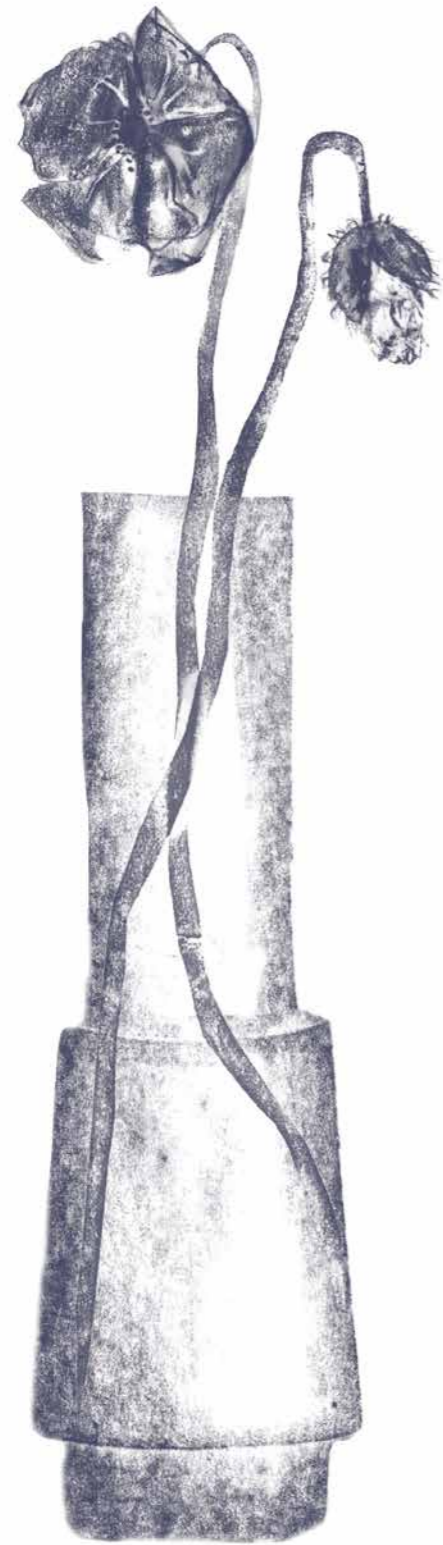
The spacious inner of the Hurricane allows the candle to burn with a steady flame, regardless if it has been placed indoor or outdoor. Hurricane is handblown in a light quality of glass. In this technique smaller air bubbles might appear in the glass and the intensity in colour may vary.

Hurricane is available in many sizes, for wide candles and tea lights. Hurricanes can also be used as vases for flowers or other objects.

Hurricane is designed by Rebecca Uth



Illustration of Hurricane vase no. 44 for the packaging.
Our packaging is made of 100% recycled cardboard
and printed in dark blue colour.



HURRICANE
no. 26, Heather

HURRICANE VASE
no. 44, Amber



HURRICANE COLLECTION
at the seaside by Falsled, just outside our office

Ro is a state of mind.
A feeling.
To be in the present.
A place where the
abstractness of art and
intuitive styling merge
with functional design
philosophy.





HURRICANE
no. 26, Amber

RESTAURANT TANG, DEN BLÅ PLANET
COPENHAGEN



CARAFE & GLASS

A geometrically distinct carafe and a drinking glass in handblown glass. The design invites you to flexible usage. The cylinder top neck is the handle and it is spacious enough for adding ice cubes, lemons, a mint stick or other flavours into the carafe. The spherical drinking glass fits as a lid on the carafe and when two glasses are stacked on the top, the set is easily lifted with one hand. Finally, the design is a perfect bedside water carafe set.

The Carafe holds 1100 ml and the Glass 250 ml. They are only for cold drinks. The Glass is stackable and both the glasses and the carafes go in the dishwasher.

Carafe & Glass are designed by Rebecca Uth.



OAK PIECE
no. 32



CARAFE
no. 49, Smoked grey

GLASS
no. 48, Smoked grey

26



CARAFE & GLASS
no. 48 & 49, Clear, Clear dots, Smoked grey

27



Illustration of Carafe & Glass

The Carafe & Glass is handcrafted in three variations

A pure and clear version, an elegant classic Smoked grey and a sophisticated version blown in optical honeycomb pattern of dots scattered in the hot glass. This traditional craft technique makes each piece different. The top rim may be wavy and the pattern random scattered.



CARAFE & GLASS
no. 48 & 49
Clear, Clear dots, Smoked grey

GLASS BOWL

A geometrically distinct bowl in handblown glass. Handmade with great attention to details and everyday use. The spacious bowl is lifted up by the cylinder stand and generously presents the dish at the dining table. The bowl can be used for serving salads and fruits, desserts and the like.

28

GLASS BOWL
no. 51, Smoked grey



29

GLASS BOWL
no. 50, Smoked grey



The Glass Bowl is designed in two practical sizes in our colour tones, an elegant classic Smoked grey and a sophisticated version blown in optical honeycomb pattern of dots scattered in the hot glass. This traditional craft technique makes each piece one of a kind. The Glass Bowl is stackable and goes in the dishwasher.

Glass Bowl is designed by Rebecca Uth.



GLASS BOWL
no. 51, Clear dots

The pattern of dots scattered in the glass. This traditional craft technique makes each piece different. The top rim is wavy and the dots random scattered.

GLASS BOWL
no. 50, Clear dots



LIGHT PIECE
being moulded by Rebecca Uth

LIGHT PIECE

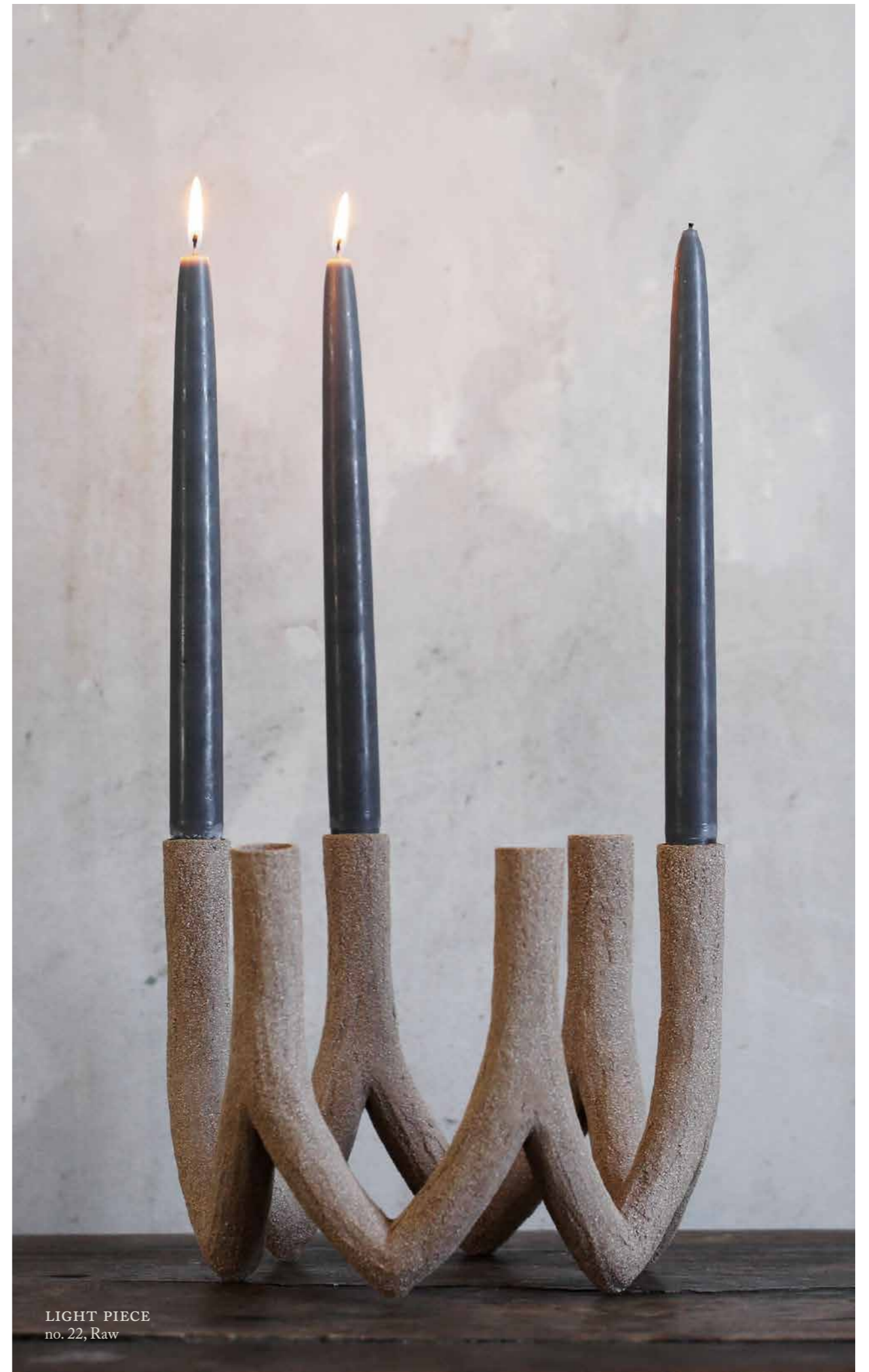
The Light Piece is uniquely created with inspiration from the traditional craft of Nordic candlelight crowns. The artistic chandeliers holds up to three and six tall candles but are beautiful with fewer as well.

Light Piece is shaped by hand in stoneware with a crisp, rustic expression that both contrasts and compliments its' candles, which almost seem to grow from the sticks.

The complicated crafted pieces are all handmade by skilled artisans at a small ceramic factory at the Danish island Bornholm.

Each piece has a certificate of authenticity with an item number within a batch of 50 pieces.

Light Piece is created by Rebecca Uth.



LIGHT PIECE
no. 22, Raw



34

TRAY

The wooden tray repeats the organic shape inspired by our ceramic tableware.

The light yet strong frame makes the tray easy to carry and roomy for daily use. The small tray is suitable for a solitude afternoon tea moment, as a breadbasket for the breakfast table, or for storage of your oil and spices by the stove. The large tray is particularly useful when setting the table, when serving tea or coffee for several people, or when serving cold drinks in the garden.

When not in use, the tray can be hung on the wall or stored upright on the kitchen table or a shelf. Its triangular shape will prevent it from rolling over when placed upright. The lacquer finish has a mat expression, emphasising the natural grain of the ash wood and making the tray easy to maintain for daily use.

Tray is designed by Rebecca Uth.

MUG
no. 37

TRAY
no. 46, Nature



PLATE
no. 33

MUG
no. 37

TRAY
no. 46, Nature

36

With a calm rhythm, the classic herringbone pattern has represented simple elegance for centuries

37

In new poetic compositions, the old pattern has been brought to life. Table piece invites you to create a new and inspiring way of preparing, presenting and serving food. Use it in the kitchen as a basic chopping and cutting board, as a serving board at the dining table for various tapas or bread — or as a coaster for hot teapots.

TABLE PIECE
no. 40, 41 & 42
Nature



TABLE PIECE
no. 40
Nature

BOWL
no. 7
Charcoal

TABLE PIECE

Table Piece is a series of thick oak serving boards inspired by the herringbone floor.

Here it is used for serving traditional Danish “smørrebrød” for lunch.

When it is not in use, the board creates an iconic decoration, stored up against the wall at the kitchen table top.

Each Table Piece has its own characteristics and functionality. By combining the different boards on the dinner table, new rhythms and patterns appear — almost like creating an art piece of your own.

Table Piece is designed by Line Frier.

39



TABLE PIECE
no. 41, Nature

HURRICANE VASE
no. 44, Smoked grey

TABLE PIECE
no. 41, Nature

TOOLBOX
no. 4, Tint

MILL
no. 16, Nature

BOWL
no. 38, 8, 39, Ultramarine



TOOLBOX
no. 4, Nature

CUP
no. 36, Slate grey



TOOLBOX

The Toolbox is a feinschmecker tray and multipurpose and flexible storage piece inspired by the traditional handyman toolbox. The designer Aurélien Barbry is rethinking functionality and aesthetics in this minimal luxury storage box, which can be used to store various items, such as magazines, kitchen and office equipment.

The Toolbox is handmade in solid ash wood, a living material that creates different shades and a decorative play in the wood grain. It comes in two colour variations. A natural and a dark brown tinted oil treatment to protect the wood.

The Toolbox is available in two sizes, a low and wide version, as well as a tall version. It is not recommended to load the Toolbox with more than 6 kg.

Toolbox is designed by Aurélien Barbry



TOOLBOX
no. 5
Tint





HURRICANE TEALIGHT no. 25, Smoked grey platinum

HURRICANE no. 26, Smoked grey

TOOLBOX no. 5, Nature

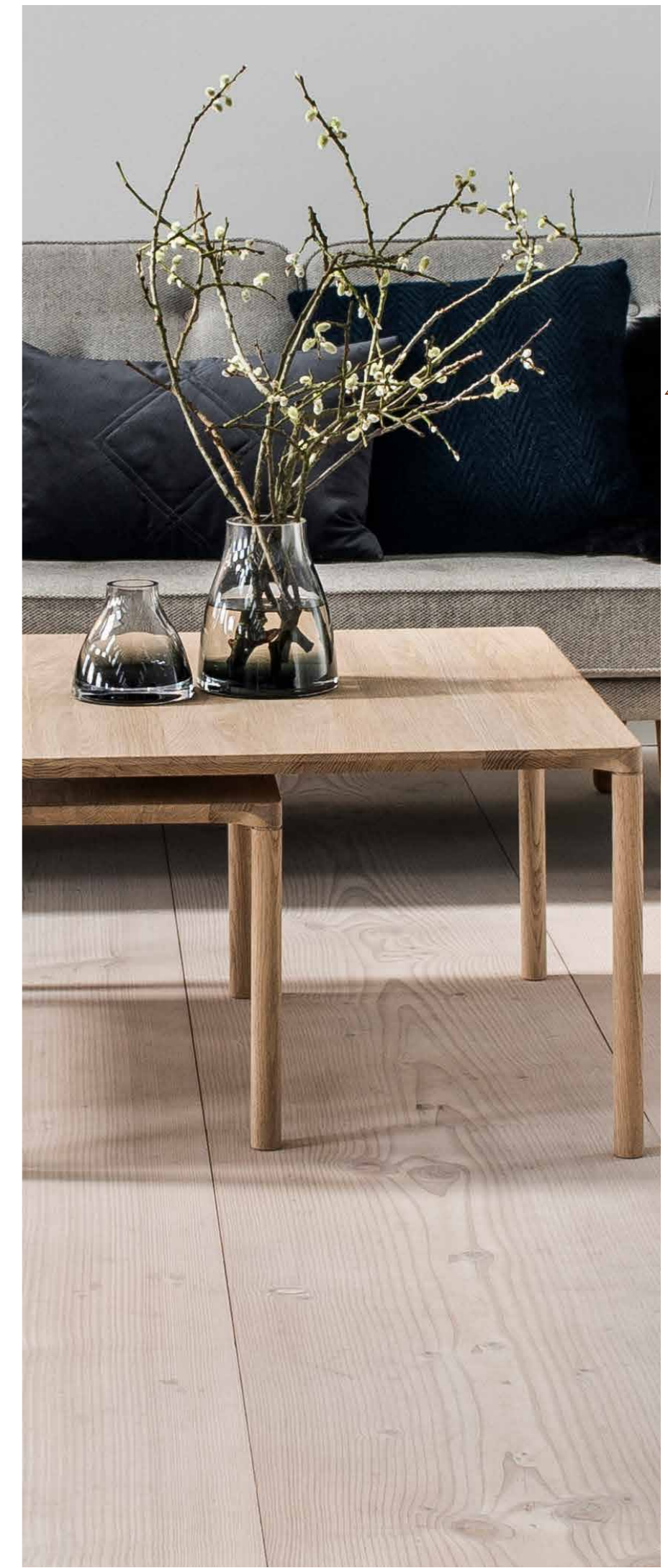
FREDERICIA FURNITURE SHOWROOM, COPENHAGEN

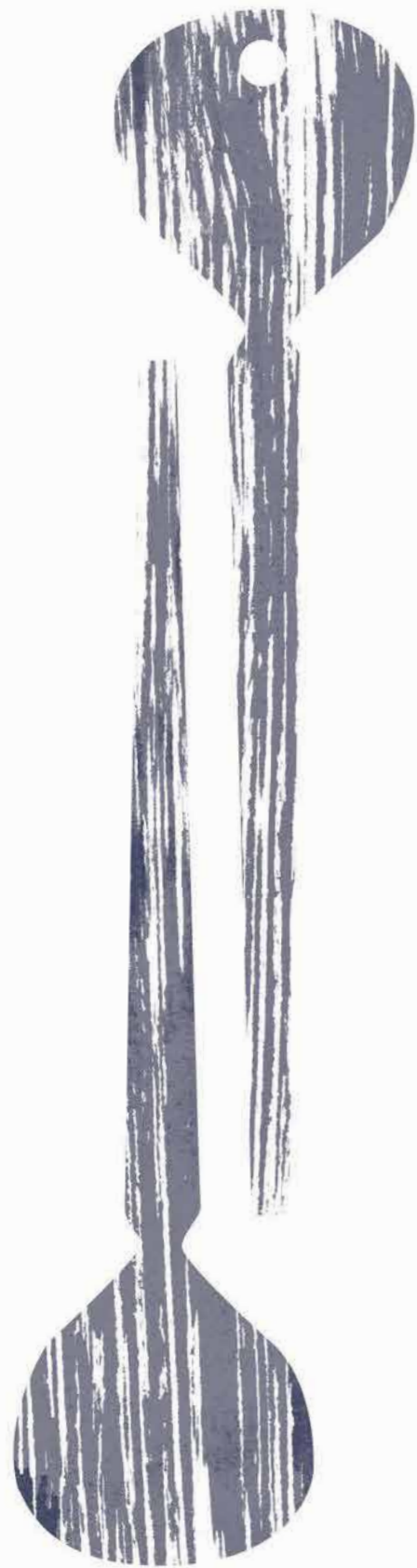
Ro Collection is a contrast to the
fast and constantly changing
world we live in

On the move, we forget our artistic heritage
and the quality of craftsmanship.
With an artistic approach, Ro Collection brings
thorough design and good craft back to
the objects with which we surround ourselves.

LIGHT PIECE no. 22, Raw
BOWL no. 9 and 10, Ash grey
TOOLBOX no. 5 Tint
FLOWER VASE no. 1 and 2, Smoked grey

FREDERICIA FURNITURE SHOWROOM,
COPENHAGEN





SALAD SERVERS

Salad Servers are made to be both a functional and decorative set of tools. With the strict geometric edges mixed with an organic shape, the set is a modern interpretation of a traditional cutlery shape.

The Salad Servers are a perfect and warm complement for the Bowl series in ceramic. They are created from a single piece of wood and the natural ash wood has been given a smooth polish treatment, to activate the natural oils within the wood – which makes it easy to maintain.

Salad Servers are designed by Rebecca Uth.

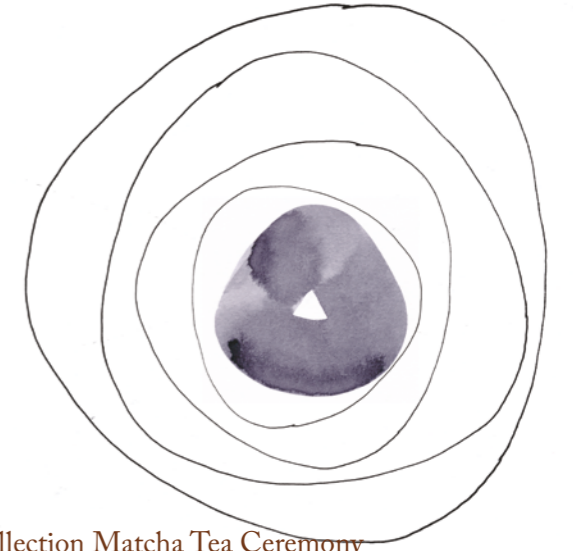


SALAD SERVERS
no. 15, Nature

BOWL

The organic stoneware bowls have become archetypal for Ro Collection. They are a series of useful bowls created with Japanese aesthetics and Danish functionality.

The Bowls are hand casted in stoneware and glazed in vivid colour glazes. These bowls are a Nordic setting for everything you may put into them, such as spices, dips, snacks, salads, fruit, and various accessories. The colour tone of the glaze may differ from bowl to bowl making each piece unique. The high base at the bottom lifts the bowl up in a way that it appears to float on the table.



The Ro Collection Matcha Tea Ceremony performed by a true Italian barrista with Japanese matcha powder, and hot Danish milk in an Ash grey Bowl no. 8



BOWL no. 7 & 8 Ash grey



The Bowl is available in seven sizes and is suitable for serving both hot and cold dishes. The Bowl can go in both oven, microwave oven and dishwasher.

Bowl series is designed by Rebecca Uth.

BOWL no. 9 Ash grey
HURRICANE no. 25 Smoked grey gold



BOWL
no. 7 & 9
Ash grey

A hand casted ovenproof stoneware bowl in blue

In the rural landscape of Portugal a small ceramic pottery creates our Bowl collection in stoneware, based on traditional craft techniques.

52



The hand casted bowl, still in soft clay, is born out of the mould.

The leftover material is being removed, and the bowl must dry before firing in the kiln.

53



The Bowls are hand casted in a small pottery, where talented ceramic craftsmen create ceramic with enthusiastic entrepreneurship.

Bowls just out of the kiln. Ready to be packed and shipped to Denmark.

It is a joy to see the bowls materialised after a month long design process in Denmark and many days of handcrafted work in the pottery.

Bowls are made for fruit and salad, cold or hot dishes, baking bread or cakes or any kind of food in the oven.

BOWL
no. 9, 10 & 11
Ultramarine





BOWL
no. 8 & 39
Ultramarine

Ro Collection Tableware.
A complementing background for dining,
with a clear reference to the surrounding
Nordic nature and kitchen

The colour tone of the glaze may differ from plate to plate and cup to cup making each piece special. The plates are available in three sizes and suitable for breakfast, lunch and dinner. The tableware can go in the dishwasher and microwave oven.

56



CUP, MUG & PLATE

no. 33, 34, 35

Slate grey

BOWL

no. 7 & 8

Chromium green

RESTAURANT 56 GRADER,
COPENHAGEN



57





OAK PIECE
no. 32
Nature

OAK PIECE

Oak Piece is a wooden object with a plateau which besides from its sculptural value is inviting to be used in different ways. Use it on the dining table for exquisite delicacies such as salt, cheeses or the like. On the bedside table for the highly treasured jewellery.

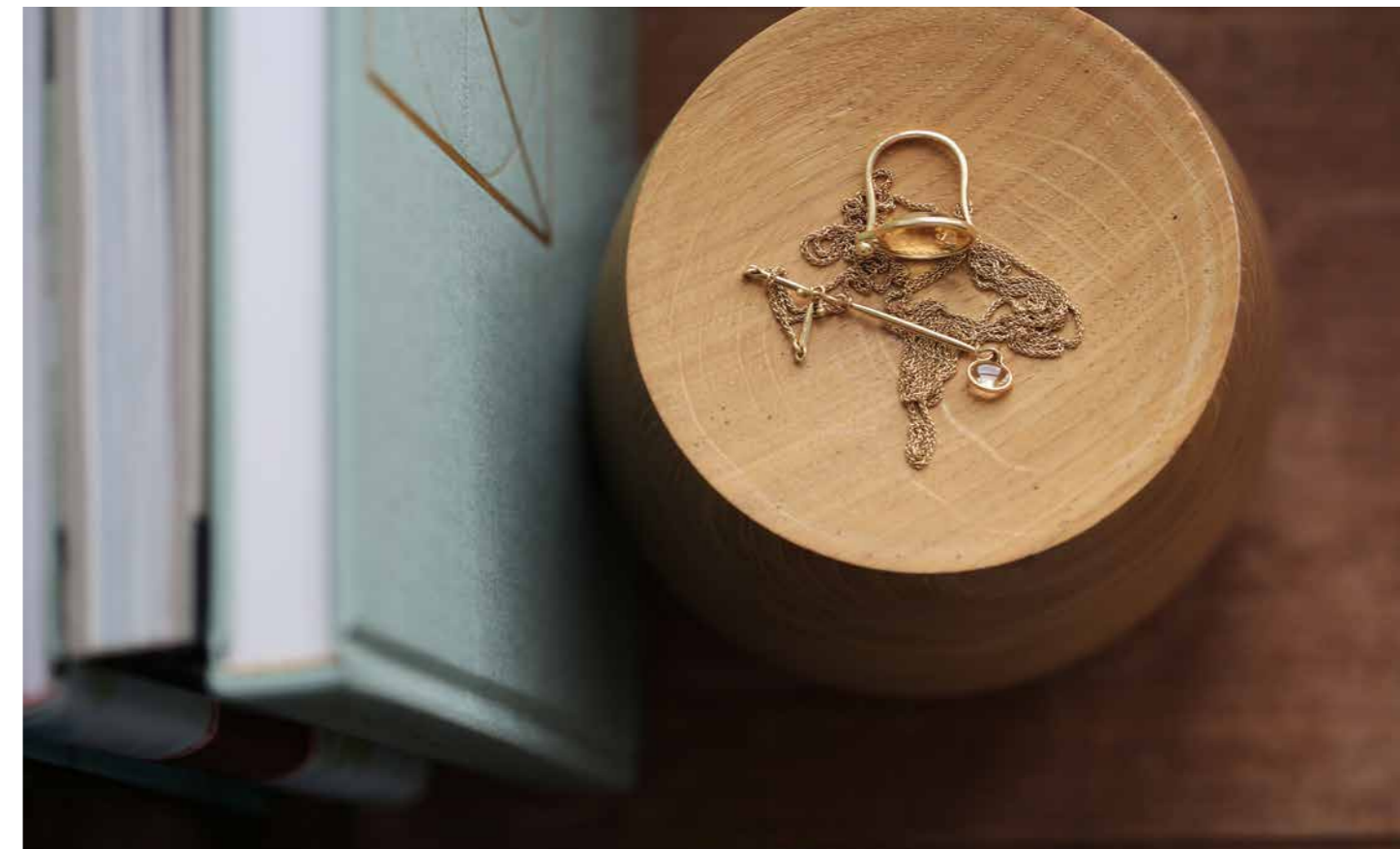
From the hand-picked massive logs, the Oak Pieces are created in a dedicated and slow handcrafted woodturning process. When the perfect shape is achieved, the wood is treated with a light lacquer to make the wood appear in the most beautiful way, disposing its life, the natural cracks and the graining.

The sculpture will patinate and change with time, it might get more cracks which will give it a unique character. Each sculpture is woodturned by hand and comes in 3 different shapes, a tall, a wide and a flat plateau.

Oak Pieces are created by Mikkel Karshøj.

"To capture nature in a product is important for me. Wood represent time and the beautiful grains is a work of art in itself. Often I find myself wanting to stop in the middle of the process to preserve that exact image of the moment."

Mikkel Karshøj



OAK PIECE
no. 31
Nature



The oak wood is more than 100 years old yet still alive

OAK PIECE
no. 30
Nature



The family of woodturners take part in the creative process with Rebecca Uth.



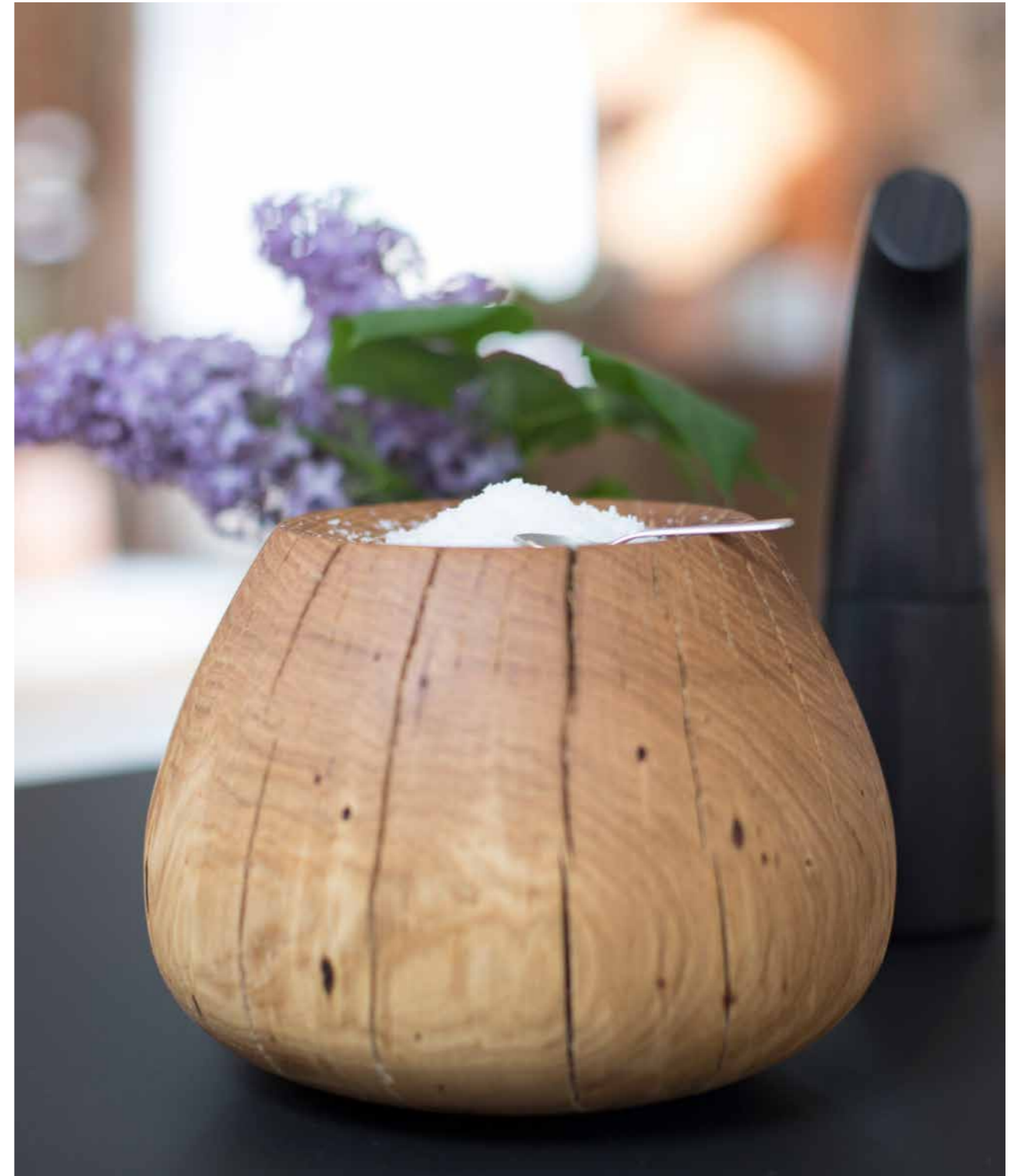
Oak Piece is a wooden object made from hand-picked massive logs, that have dried for more than 10 years.

The Oak Pieces are handcrafted at a family owned workshop in central Portugal where proud woodturning traditions have existed for generations.

Oak Piece is designed by Mikkel Karlsbøj.



All the Oak Pieces have their own life, cracks and variations in the grains.





MILL

The Mill is a grinder. A tool in the kitchen that works individually or as a set of two for salt and pepper. The Mill is functional, friendly and welcoming. The Mill is simple and sculptural – a grinder, which intuitively indicates its operation.

The Mill is made of natural and black stained ash, which has been given a light lacquer treatment that makes the Mill resilient in the kitchen.

The Mill is easy to separate in the middle and fill with peppercorns or other spices. The inner grinder is a high quality CrushGrind mechanism, which activates the ethereal oils of the spices when used. The Mill is easy to adjust at the bottom – to make the grains ground more coarse or fine.

The Mill is designed by Jakob Wagner.

MILL
no. 16
Tint
BOWL
no. 7
Ultramarine



HURRICANE no. 25, Amber
CUP, MUG & PLATE no. 33, 34, 35, Slate grey
BOWL no. 8, Ultramarine

DREWSSENS CAFÉ, WINE & TAPASBAR
SILKEBORG



BBQ TOOLS

BBQ Tools consist of three tools designed with effective functionality and attention to detail. All three tools have perfect weight distribution and are therefore comfortable in the hand when working at a hot barbecue pit.

BBQ Tools consist of a palette, a grabber, and a fork, all designed to hang on the side of a barbecue pit. The palette is sharp on the edge, so it easily slides under food, while the grabber is shaped to easily handle sausages, steaks, and vegetables. The forks tips are made of steel to reinforce secure grip of the food. All three tools are made of stainless steel with a silk polished surface which is easy to maintain by normal washing.

When BBQ Tools are not in use, they are securely stored in a bag made of jute — a coarsely woven, strong and environmentally friendly natural material.

BBQ Tools are designed by Jakob Wagner





CANDLESTICK RHOMB
no. 27
Black iron



FLOWER VASE
no. 1
Smoked grey

CANDLESTICK CYLINDER
no. 28
Brown brass



CANDLESTICK

Candlesticks is a series of geometrically designed candlesticks in solid metals. Rhomb in black iron, Polygon in brushed brass and Cylinder in brown brass.

The candlesticks are designed for pillar candles. They are very heavy which gives a solid stand. Brass oxidises over time and its colour will become darker and deeper.

Candlestick is designed by Rebecca Uth.

CANDLESTICK POLYGON
no. 29
Brass

Product overview



FLOWER VASE



FLOWER VASE
no. 1

STYLE NO
RD1000

SIZE
H 12 cm
Ø 13 cm

COLOUR
004 Smoked grey
013 Indigo blue
016 Burnt sienna

FLOWER VASE
no. 2

STYLE NO
RD1001

SIZE
H 18 cm
Ø 15 cm

COLOUR
004 Smoked grey
013 Indigo blue
016 Burnt sienna

FLOWER VASE
no. 3

STYLE NO
RD1002

SIZE
H 34 cm
Ø 19 cm

COLOUR
004 Smoked grey
013 Indigo blue
016 Burnt sienna

FLOWER VASE
no. 23

STYLE NO
RD1021

SIZE
H 18 cm
Ø 24 cm

COLOUR
004 Smoked grey
013 Indigo blue

FLOWER VASE
no. 24

STYLE NO
RG1002

SIZE
H 40 cm
Ø 34 cm

COLOUR
004 Smoked grey
013 Indigo blue

HURRICANE

HURRICANE



HURRICANE
no. 25

STYLE NO
RD1030

SIZE
H 10 cm
Ø 9 cm

COLOUR
001 Clear

HURRICANE
no. 25

STYLE NO
RD1031

SIZE
H 10 cm
Ø 9 cm

COLOUR
004 Smoked grey
015 Amber
024 Heather

HURRICANE
no. 25

STYLE NO
RD1032

SIZE
H 10 cm
Ø 9 cm

COLOUR
005 Smoked grey + gold
006 Smoked grey + platinum

HURRICANE
no. 26

STYLE NO
RD1033

SIZE
H 25 cm
Ø 17 cm

COLOUR
001 Clear

HURRICANE
no. 26

STYLE NO
RD1034

SIZE
H 25 cm
Ø 17 cm

COLOUR
004 Smoked grey
015 Amber
024 Heather

HURRICANE
no. 26

STYLE NO
RD1035

SIZE
H 25 cm
Ø 17 cm

COLOUR
005 Smoked grey + gold
006 Smoked grey + platinum



HURRICANE
no. 44

STYLE NO
RD1072

SIZE
H 29 cm
Ø 9 cm

COLOUR
004 Smoked grey
015 Amber
024 Heather



HURRICANE
no. 45

STYLE NO
RD1074

SIZE
H 46 cm
Ø 25 cm

COLOUR
005 Smoked grey + gold
006 Smoked grey + platinum

HURRICANE
no. 45

STYLE NO
RD1073

SIZE
H 46 cm
Ø 25 cm

COLOUR
004 Smoked grey



GLASS AND CARAFEGLASS BOWL

78

GLASS

no. 48
Gift box, contains two glasses

STYLE NO
RD1082
001 Clear

RD1083
004 Smoked grey

RD1084
027 Clear dots

SIZE
H 12 cm
Ø 13 cm

COLOUR
001 Clear
004 Smoked grey
027 Clear dots

CARAFE

no. 49

STYLE NO
RD1085
001 Clear

RD1086
004 Smoked grey

RD1087
027 Clear dots

SIZE
H 23 cm
Ø 13.5 cm
1.11

COLOUR
001 Clear
004 Smoked grey
027 Clear dots

COLLECTIVE BOX

no. 48 & no. 49
Two Glasses and one Carafe

STYLE NO
RD1090
001 Clear

RD1091
004 Smoked grey

RD1092
027 Clear dots

GLASS BOWL

no. 50

STYLE NO
RD1096

SIZE
H 11 cm
Ø 19 cm

COLOUR
004 Smoked grey
027 Clear dots

GLASS BOWL

no. 51

STYLE NO
RD1097

SIZE
H 11 cm
Ø 24 cm

COLOUR
004 Smoked grey
027 Clear dots

BOWL



BOWL



BOWL
no. 7

STYLE NO
RD1006

SIZE
H 5.5 cm
Ø 8 cm

COLOUR
002 Ash grey
014 Ultramarine
017 Oxblood red
019 Chromium green

BOWL
no. 38

STYLE NO
RD1061

SIZE
H 6 cm
Ø 11 cm

COLOUR
002 Ash grey
014 Ultramarine
017 Oxblood red
019 Chromium green

BOWL
no. 8

STYLE NO
RD1007

SIZE
H 6.7 cm
Ø 14 cm

COLOUR
002 Ash grey
014 Ultramarine
017 Oxblood red
019 Chromium green

BOWL
no. 39

STYLE NO
RD1062

SIZE
H 8.5 cm
Ø 18 cm

COLOUR
002 Ash grey
014 Ultramarine
017 Oxblood red
019 Chromium green

BOWL
no. 9

STYLE NO
RD1008

SIZE
H 13,5 cm
Ø 22 cm

COLOUR
002 Ash grey
014 Ultramarine
017 Oxblood red
019 Chromium green

BOWL
no. 10

STYLE NO
RD1009

SIZE
H 9.5 cm
Ø 30.5 cm

COLOUR
002 Ash grey
014 Ultramarine
017 Oxblood red
019 Chromium green

BOWL
no. 11

STYLE NO
RD1010

SIZE
H 4 cm
Ø 34 cm

COLOUR
002 Ash grey
014 Ultramarine
017 Oxblood red
019 Chromium green

CUP, MUG AND PLATE

CUP, MUG AND PLATE

82



Cup, Mug and Plate no. 33, 34, 35, Slate grey
RESTAURANT 56 GRADER, COPENHAGEN



PLATE
no. 33

STYLE NO
RD1039
Gift box, two plates

RD1040
1 pc. without gift box

SIZE
H 2 cm
Ø 18 cm

COLOUR
003 Slate grey



PLATE
no. 34

STYLE NO
RD1041
Gift box, two plates

RD1042
1 pc. without gift box

SIZE
H 2,2 cm
Ø 23 cm

COLOUR
003 Slate grey



PLATE
no. 35

STYLE NO
RD1043
Gift box, two plates

RD1044
1 pc. without gift box

SIZE
H 2,4 cm
Ø 27 cm

COLOUR
003 Slate grey



CUP
no. 36

STYLE NO
RD1045
Gift box, two cups

RD1046
1 pc. without gift box

SIZE
H 8 cm
Ø 8,5 cm

COLOUR
003 Slate grey



MUG
no. 37

STYLE NO
RD1047
Gift box, two mugs

RD1048
1 pc. without gift box

SIZE
H 11 cm
Ø 9 cm

COLOUR
003 Slate grey

LIGHT PIECE

TOOLBOX

84



85



LIGHT PIECE

no. 21

STYLE NO
RG1000

SIZE
H 18,5 cm
Ø 13,5 cm

COLOUR
026 Raw

LIGHT PIECE

no. 22

STYLE NO
RG1001

SIZE
H 18,5 cm
Ø 27 cm

COLOUR
026 Raw

TOOLBOX

no. 4

STYLE NO
RD1003 Nature
RD1026 Tint

SIZE
H 19 cm
W 23 cm
L 46 cm

COLOUR
020 Nature
008 Tint

TOOLBOX

no. 5

STYLE NO
RD1004 Nature
RD1027 Tint

SIZE
H 37 cm
L 30 cm
W 24 cm

COLOUR
020 Nature
008 Tint

SALAD SERVERS & MILL

TABLE PIECE

86



SALAD SERVERS

no. 15

STYLE NO
RD1014

SIZE
H 2.5 cm
L 32 cm

COLOUR
020 Nature

MILL

no. 1

STYLE NO
RD1000

SIZE
H 23 cm
Ø 6 cm

COLOUR
008 Tint
020 Nature

TABLE PIECE

no. 40

STYLE NO
RD1069

SIZE
L 32 cm
W 25 cm
H 2 cm

COLOUR
020 Nature

TABLE PIECE

no. 41

STYLE NO
RD1070

SIZE
L 28.5 cm
W 43 cm
H 2 cm

COLOUR
020 Nature

TABLE PIECE

no. 42

STYLE NO
RD1071

SIZE
L 35.5 cm
W 53.5 cm
H 2 cm

COLOUR
020 Nature

TRAYTRAY
no. 46STYLE NO
RD1080SIZE
H 7.5 cm
Ø 30 cmCOLOUR
008 Tint
020 NatureTRAY
no. 47STYLE NO
RD1081SIZE
H 6 cm
Ø 39 cmCOLOUR
008 Tint
020 NatureOAK PIECEOAK PIECE WIDE
no. 30STYLE NO
RG1003SIZE
H 14 cm
Ø 19 cmCOLOUR
020 NatureOAK PIECE TALL
no. 31STYLE NO
RG1004SIZE
H 20 cm
Ø 15 cmCOLOUR
020 NatureOAK PIECE FLAT
no. 32STYLE NO
RG1005SIZE
H 7 cm
Ø 29 cmCOLOUR
020 Nature

BBQ & CANDLESTICK



BASKET



BBQ TOOLS
no. 6

STYLE NO
RD1005

SIZE
H 4 cm
W 19 cm
L 39 cm

COLOUR
012 Steel

CANDLESTICK
RHOMB
no. 27

STYLE NO
RD1036

SIZE
H 4 cm
L 7 cm
W 4 cm

COLOUR
007 Black

CANDLESTICK
CYLINDER
no. 28

STYLE NO
RD1037

SIZE
H 4 cm
Ø 4,5 cm

COLOUR
009 Brown brass

CANDLESTICK
POLYGON
no. 29

STYLE NO
RD1038

SIZE
H 4 cm
L 8 cm
W 4 cm

COLOUR
010 Brass

BASKET
no. 13

STYLE NO
RD1024

SIZE
H 43 cm
Ø 32 cm

COLOUR
007 Black
012 Steel
011 Copper

BASKET
no. 14

STYLE NO
RD1025

SIZE
H 30 cm
Ø 43 cm

COLOUR
012 Steel



ro°

COLLECTION

Office & Showroom
Assensvej 521
Falsled
DK-5642 Millinge
T +45 41 10 41 08
sales@rocollection.dk

HURRICANE
no. 44 & 26