

ro'

COLLECTION

DENMARK



QUALITY

All materials are long-lasting
and can be recycled.

ORIGINALITY

Genuine Danish design.

HANDMADE IN EUROPE

by skilled craftsmen and artisans.

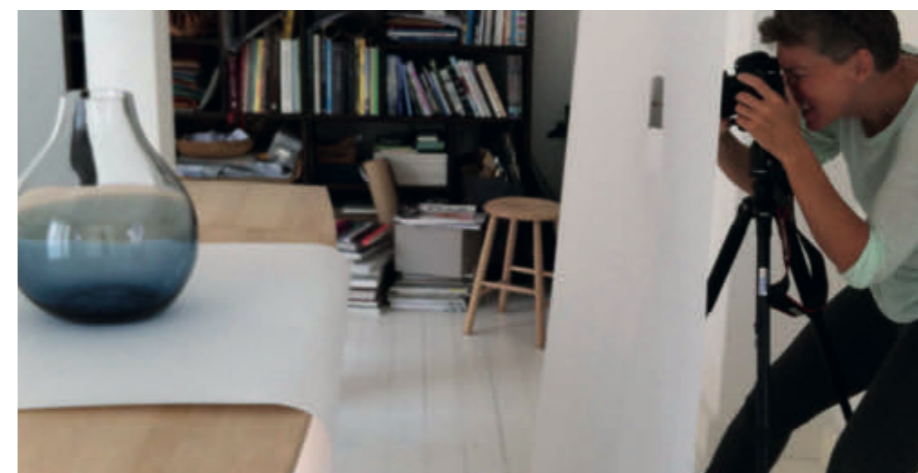
CREATING RO COLLECTION TOGETHER



Ro Collection is led by creative director Rebecca Uth and CEO Christian Lauesen. Christian and Rebecca know each other from the Danish design company Georg Jensen, where Rebecca was the chief designer and Christian Business Development Director.

Rebecca Uth

Rebecca is a qualified ceramist and designer from the The Royal Danish Academy of Fine Arts Schools of Architecture, Design and Conservation. She has collaborated with several national and international designers and has designed a number of products for Georg Jensen's collection.



Design Process

Ro Collection designs all products from scratch, either through our internal design team or in dialogue with carefully selected external designers. Ro Collection does not buy pre-designed shelf items. Our products are designed in Denmark and produced primarily in Europe. Our product development takes place in close dialogue with the craftsmen and usually takes place at their workshops.



Designers

Ro Collection collaborates with both recognized, established designers and new talents, carefully chosen by Rebecca in relation to the product idea and the designer's experience with the product category and the material.



Production

Ro Collection's products are fully or partly handmade typically at small family-owned workshops with proud traditions and focus on quality and craftsmanship.



Product Range

Ro Collection creates products across materials and product categories and works with glass, ceramics, metal and wood. Focusing on functionality, quality, good materials and thorough design, we constantly strive for our products to be of high durability so they can be used for many years, perhaps even through generations.

Ro Collection is in many ways a showdown with the prevailing “use and throw away” culture.



Ro is the Danish word for
serenity, calmness and
peace of mind.

Ro is a state of mind

A feeling

To be in the present

A place where the abstractness
of art and intuitive styling merge
with functional design philosophy







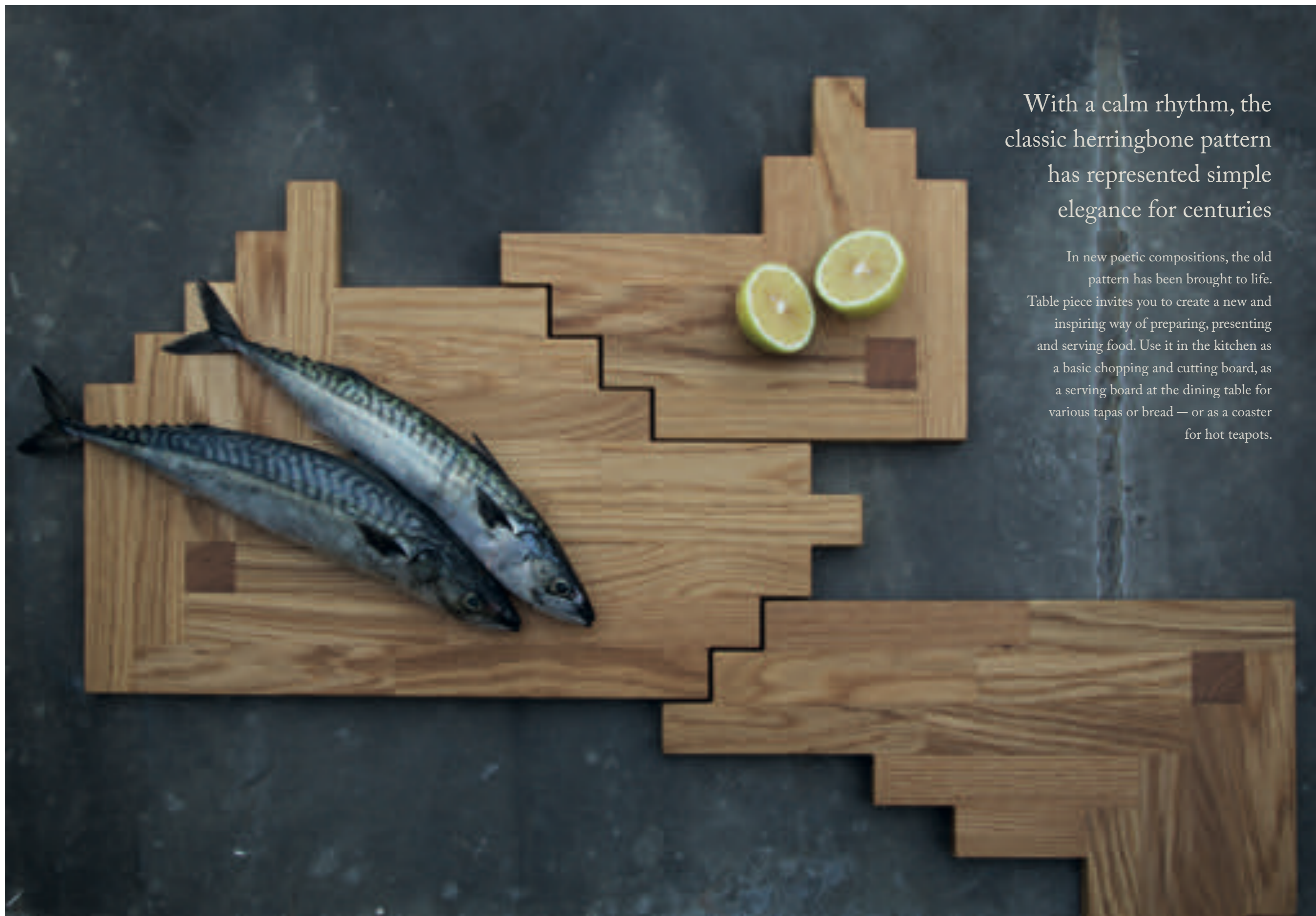












With a calm rhythm, the classic herringbone pattern has represented simple elegance for centuries

In new poetic compositions, the old pattern has been brought to life. Table piece invites you to create a new and inspiring way of preparing, presenting and serving food. Use it in the kitchen as a basic chopping and cutting board, as a serving board at the dining table for various tapas or bread — or as a coaster for hot teapots.





FLOWER VASE

Crystal clear and coloured glass come together in the Flower Vase which is handblown in heavy glass with classic craftsman principles.

The vase is handmade and tends to have individual air bubbles and differences in the colours and transparency from vase to vase, giving each piece its own unique story.

Because of its shape and weight, the flower vase stands robust, while the graduated tint at the bottom hides the flower water and lets the stems emerge gradually — as if nature and object merge in both an aesthetic and functional unity.

The Flower Vase is available in five sizes, three colours, and is suited for both small and large bouquets including long-stemmed flowers and branches.

Flower Vase is created by designer Nina Erichsen.

FLOWER VASE
no. 1 & 2

A traditional glass-blowing handcraft in natural colour tones

All Ro's glassware are handblown pieces. Crystal clear glass and coloured glass are melted together. The glassmaker blows the melted glass into a mould. Their colours are reminiscent of antique chemist jars, bottles and fine art pieces in Smoked grey glass and held in colour tones of the surrounding nature of Denmark — the clear blue sea, the amber and grey stones from our coast, purple from the heathlands.



FLOWER VASE
no. 23



All glass pieces are designed in Denmark and the creative process is grounded by handcraft in small workshops.



After down cooling of the 1300 degrees hot vase the true colour appears.



Illustration of Carafe & Glass

The Carafe & Glass is handcrafted in three variations

A pure and clear version, an elegant classic Smoked grey and a sophisticated version blown in optical honeycomb pattern of dots scattered in the hot glass. This traditional craft technique makes each piece different. The top rim may be wavy and the pattern random scattered.



CARAFE
no. 49

GLASS
no. 48

CARAFE & GLASS

A geometrically distinct carafe and a drinking glass in handblown glass. The design invites you to flexible usage. The cylinder top neck is the handle and it is spacious enough for adding ice cubes, lemons, a mint stick or other flavours into the carafe. The spherical drinking glass fits as a lid on the carafe and when two glasses are stacked on the top, the set is easily lifted with one hand. Finally, the design is a perfect bedside water carafe set.

The Carafe holds 1100 ml and the Glass 250 ml. They are only for cold drinks. The Glass is stackable and both the glasses and the carafes go in the dishwasher.

Carafe & Glass are designed by Rebecca Uth.



OAK PIECE
no. 32

CARAFE
no. 49

GLASS
no. 48



LIGHT PIECE
no. 22

LIGHT PIECE

The Light Piece is uniquely created with inspiration from the traditional craft of Nordic candlelight crowns. The artistic chandeliers holds up to three and six tall candles but are beautiful with fewer as well.

Light Piece is shaped by hand in stoneware with a crisp, rustic expression that both contrasts and compliments its' candles, which almost seem to grow from the sticks.

The complicated crafted pieces are all handmade by skilled artisans at Den Danske Keramikfabrik, a small ceramic factory at the Danish island Bornholm.

Each piece has a certificate of authenticity with an item number within a batch of 50 pieces.

Light Piece is created by Rebecca Uth.



LIGHT PIECE
no. 22





Oak Piece is a wooden
object made from
hand-picked massive logs,
that have dried for more
than 10 years.

The oak wood is
more than 100
years old
yet still alive

The Oak Pieces are
handcrafted at a family
owned workshop in
central Portugal where
proud woodturning
traditions have existed
for generations.

*Oak Piece is designed
by Mikkel Karlsbøj.*

BBQ TOOLS

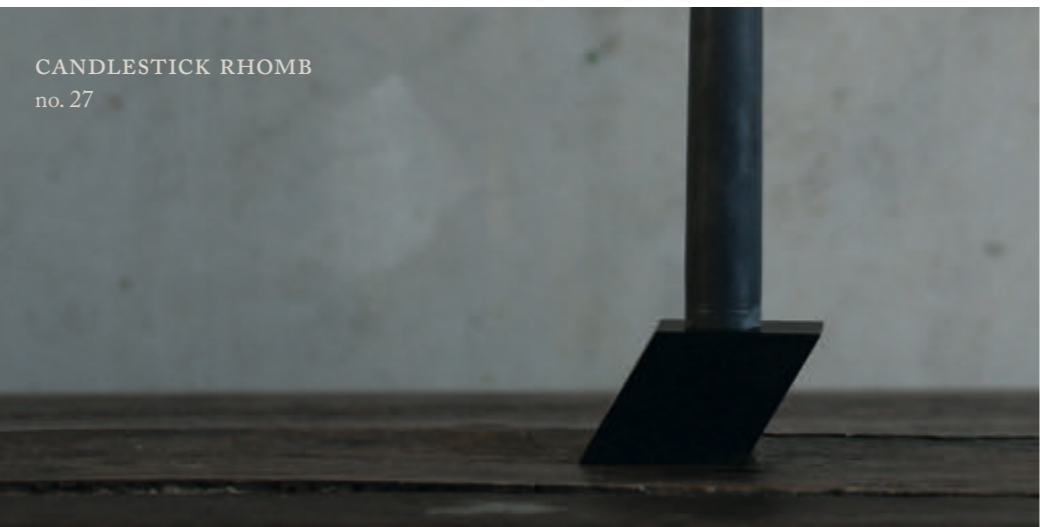
BBQTools consist of three tools designed with effective functionality and attention to detail. All three tools have perfect weight distribution and are therefore comfortable in the hand when working at a hot barbecue pit.

BBQTools consist of a palette, a grabber, and a fork, all designed to hang on the side of a barbecue pit. The palette is sharp on the edge, so it easily slides under food, while the grabber is shaped to easily handle sausages, steaks, and vegetables. The forks tips are made of steel to reinforce secure grip of the food. All three tools are made of stainless steel with a silk polished surface which is easy to maintain by normal washing.

When BBQTools are not in use, they are securely stored in a bag made of jute — a coarsely woven, strong and environmentally friendly natural material.

BBQ Tools are designed by Jakob Wagner



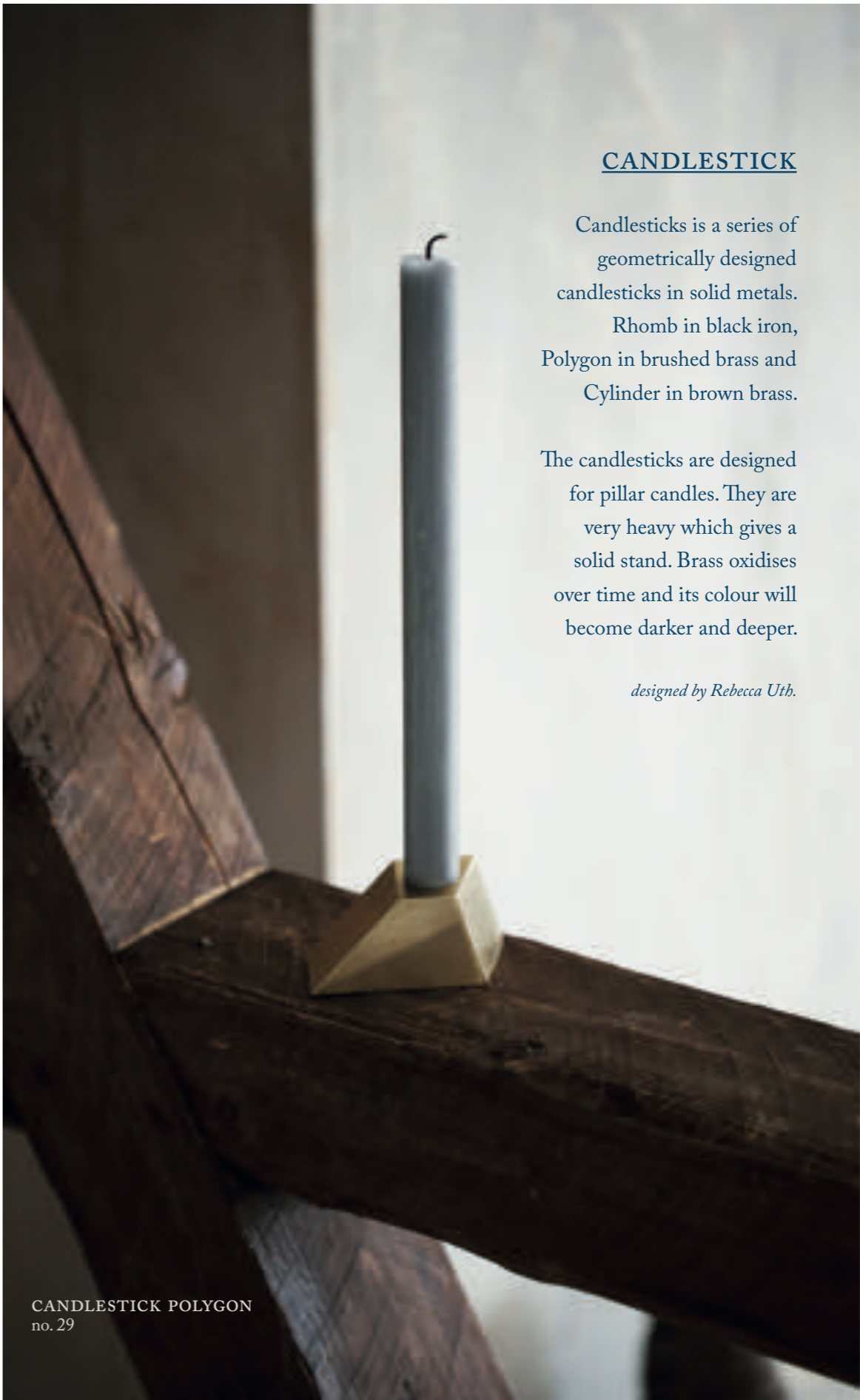


CANDLESTICK RHOMB
no. 27



FLOWER VASE
no. 1

CANDLESTICK CYLINDER
no. 28



CANDLESTICK

Candlesticks is a series of geometrically designed candlesticks in solid metals.

Rhomb in black iron,
Polygon in brushed brass and
Cylinder in brown brass.

The candlesticks are designed for pillar candles. They are very heavy which gives a solid stand. Brass oxidises over time and its colour will become darker and deeper.

designed by Rebecca Uth.

CANDLESTICK POLYGON
no. 29

MILL

The Mill is a grinder. A tool in the kitchen that works individually or as a set of two for salt and pepper. The Mill is functional, friendly and welcoming.

The Mill is simple and sculptural
– a grinder, which intuitively
indicates its operation.

The Mill is made of natural and black stained ash, which has been given a light lacquer treatment that makes the Mill resilient in the kitchen.

The Mill is easy to separate in the middle and fill with peppercorns or other spices. The inner grinder is a high quality CrushGrind mechanism, which activates the ethereal oils of the spices when used. The Mill is easy to adjust at the bottom – to make the grains ground more coarse or fine.

The Mill is designed by Jakob Wagner.





“To capture nature in a product is important for me. Wood represent time and the beautiful grains is a work of art in itself. Often I find myself wanting to stop in the middle of the process to preserve that exact image of the moment.”

Mikkel Karlsbøj



OAK PIECE

Oak Piece is a wooden object with a plateau which besides from its sculptural value is inviting to be used in different ways. Use it on the dining table for exquisite delicacies such as salt, cheeses or the like. On the bedside table for the highly treasured jewellery.

From the hand-picked massive logs, the Oak Pieces are created in a dedicated and slow handcrafted woodturning process. When the perfect shape is achieved, the wood is treated with a light lacquer to make the wood appear in the most beautiful way, disposing its life, the natural cracks and the graining.

The sculpture will patinate and change with time, it might get more cracks which will give it a unique character. Each sculpture is woodturned by hand and comes in 3 different shapes, a tall, a wide and a flat plateau.

Oak Pieces are created by Mikkel Karlsbøj.



OAK PIECE
no. 31

The Bowls are hand casted in a small pottery, where a talented ceramic craftsman and a dedicated team creates ceramic with enthusiastic entrepreneurship



The hand casted bowl, still in soft clay, is born out of the mould.



A hand casted ovenproof stoneware bowl in blue

In Portugal a small ceramic pottery creates our Bowl series in stoneware, based on traditional craft techniques.



The leftover material is being removed, and the bowl must dry before firing in the kiln.



Bowls are made for fruit and salad, cold or hot dishes, baking bread or cakes or any kind of food in the oven.



BOWL
no. 9, 10
& 11

BOWL

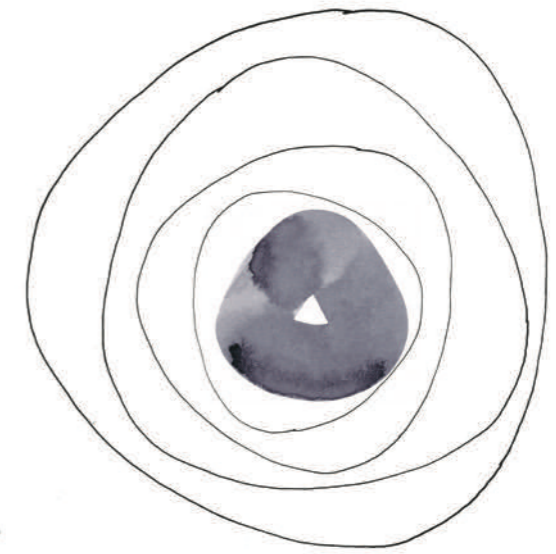
The organic stoneware bowls have become archetypal for Ro. They are a series of useful bowls created with Japanese aesthetics and Danish functionality.

The Bowls are hand casted in stoneware and glazed in vivid colour glazes. These bowls are a Nordic setting for everything you may put into them, such as spices, dips, snacks, salads, fruit, and various accessories. The colour tone of the glaze may differ from bowl to bowl making each piece unique. The high base at the bottom lifts the bowl up in a way that it appears to float on the table.

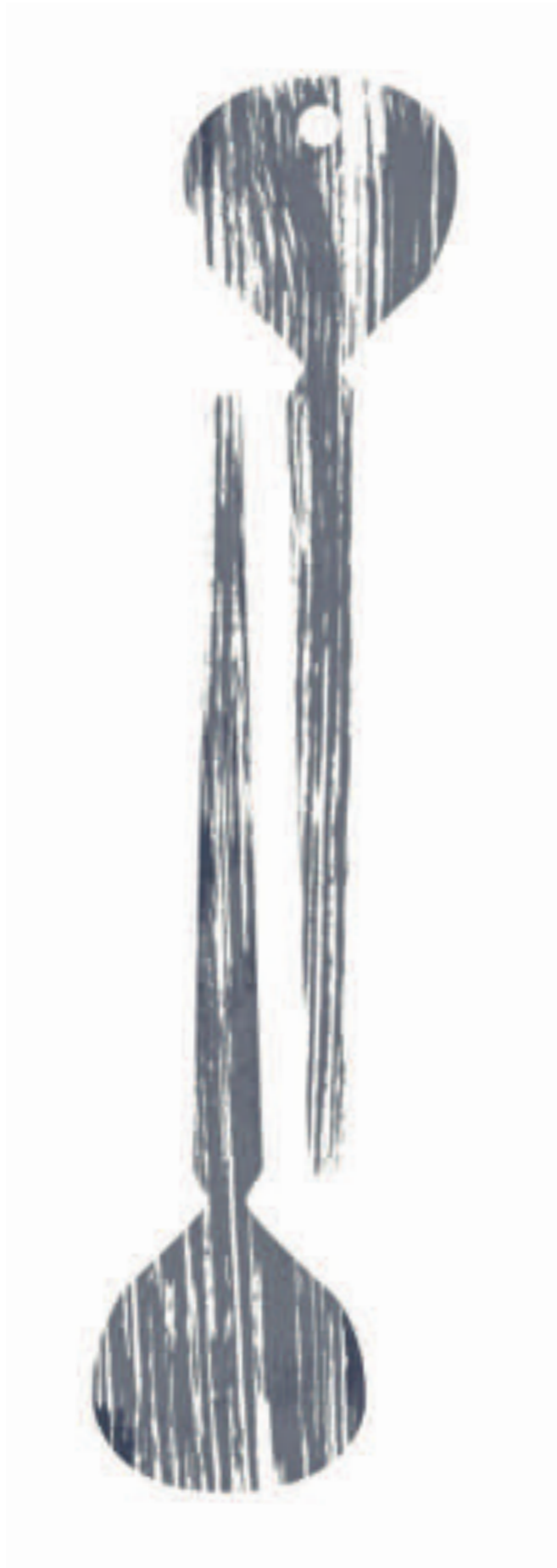
The Bowl is available in seven sizes and is suitable for serving both hot and cold dishes. The Bowl can go in both oven, microwave oven and dishwasher.

Bowl series is designed by Rebecca Uth.

The Ro Matcha Tea Ceremony
performed by a true Italian barrista with
Japanese matcha powder, and hot Danish milk
in an Ash grey Bowl no. 8



BOWL
no. 7 & 8



SALAD SERVERS

Salad Servers are made to be both a functional and decorative set of tools. With the strict geometric edges mixed with an organic shape, the set is a modern interpretation of a traditional cutlery shape.

The Salad Servers are a perfect and warm complement for the Bowl series in ceramic. They are created from a single piece of wood and the natural ash wood has been given a smooth polish treatment, to activate the natural oils within the wood – which makes it easy to maintain.

Salad Servers are designed by Rebecca Uth.



SALAD SERVERS
no. 15

Ro is a contrast to the fast and
constantly changing world
we live in

HURRICANE no. 25, Smoked grey gold
HURRICANE no. 26, Smoked grey
LIGHT PIECE no. 22
BOWL no. 9 and 10, Ash grey
TOOLBOX no. 5 Tint
FLOWER VASE no. 1 and 2, Smoked grey

FREDERICIA FURNITURE SHOWROOM,
COPENHAGEN

On the move, we forget our artistic heritage
and the quality of craftsmanship.
With an artistic approach, Ro brings
thorough design and good craft back to
the objects with which we surround ourselves.



TOOLBOX

The Toolbox is a feinschmecker tray and multipurpose and flexible storage piece inspired by the traditional handyman toolbox. The designer Aurélien Barbry is rethinking functionality and aesthetics in this minimal luxury storage box, which can be used to store various items, such as magazines, kitchen and office equipment.

The Toolbox is handmade in solid ash wood, a living material that creates different shades and a decorative play in the wood grain. It comes in two colour variations. A natural and a dark brown tinted oil treatment to protect the wood.

The Toolbox is available in two sizes, a low and wide version, as well as a tall version. It is not recommended to load the Toolbox with more than 6 kg.

Toolbox is designed by Aurélien Barbry



TOOLBOX
no. 4 & 5



TOOLBOX
no. 4

MILL
no. 16

BOWL
no. 7





Illustration of Hurricane vase no. 44 for the packaging.
Ro packaging is made of 100% recycled cardboard and
printed in dark blue colour.



HURRICANE
no. 45



HURRICANE
no. 25, 26, 44 & 45

HURRICANE

With inspiration from the antique kerosene lamps, where a tall cylinder of glass spreads the light and protects the flame from the surroundings, the Hurricane is born.

Hurricane adds evocative light to summer nights on balconies and terraces and lights up cosy moments indoor.

The many variations of coloured glass create atmosphere. Light and simple in the crystal clear glass. Warm and cosy with Amber. Classic ambience in Smoked grey and Heather. Exclusive moments in hand-painted pure Platinum or Gold on Smoked grey glass.

The spacious inner of the Hurricane allows the candle to burn with a steady flame, regardless if it has been placed indoor or outdoor. Hurricane is handblown in a light quality of glass. In this technique smaller air bubbles might appear in the glass and the intensity in colour may vary.

Hurricane is available in many sizes, for wide candles and tea lights.

Hurricanes can also be used as vases for flowers or other objects.

Hurricane is designed by Rebecca Uth

HURRICANE
no. 25, 26, 44 & 45

A lantern and a vase, at the same time

Hurricane is a handblown glass series in natural colour tones for both candlelights and flowers.

Some are simple in solid colours and some are mixed with brushstrokes of pure gold and platinum.

The precious metals are hand-painted onto the Smoked grey glass in a thin layer to make it translucent, to allow the flame of the light to shine through.





KOPENHAGUE, PARIS